

## Component Replacement - electrical -



*Xperia™ Z5  
Premium  
E6853*

*Xperia™ Z5  
Premium Dual  
E6833 and E6883*

## CONTENTS

1	Replaceable Components .....	3
2	Component Placing.....	6
3	Additional Repair info .....	10
4	Revision History .....	17

***For general information about electrical repair related issues, refer to 1220-1336: Generic Repair Manual - electrical***

***Baking prior to repair is required, if the board have been exposed to air more than 12 hours from PWB package opening. Too long exposure time increase the level of moisture in PWB and the PWB could delaminate during repair process and result in direct or latent failures and reduce reliability.***

***The boards shall be baked in 125°C ±5°C for 4 hours.***

***Test after electrical replacement: refer to 1273-1772 Mechanical Test Instruction***

***All Electrical components are RLC level B, Reversed Logistic Classification, See the Spare Part Handling chapter in Mechanical/Generic Repair Manual 1220-1333.***

***Do not remove shield can lids (Heat pasta are added and RF performance will be damaged)***

## 1 Replaceable Components

### EXPLANATION OF ABBREVIATIONS USED IN THE COLUMN 'COMMENTS' BELOW

#### **COMPONENT LOCATION**

**P** = Primary side

**S** = Secondary side

#### **REPAIR METHOD**

**HA** = Hot Air (removal & mounting)

**ST** = Soldering Tool (removal & mounting)

**HA/ST** = Hot Air for removal - Soldering Tool for mounting

**BGA** = BGA Station

**BH** = Bottom Heater

#### **ADDITIONAL INFORMATION**

⇒1 (2,3,4, etc.) = Proceed to 'Additional Repair Info' for further instructions in the indicated section(s).

Position	Component	Part no.	Comments
CN1300	Conn BtB Plug 4p HIROSE/BM22	1281-9973	S HA+BH ⇨1
CN2600	Conn Leaf Spring Plug 1p	1289-4034	P HA+BH ⇨2
CN2611	Conn Coax Receptacle 1p	1261-3585	S HA+BH ⇨3
CN2612	Conn Leaf Spring Plug 1p	1289-4034	P HA+BH ⇨2
CN2613	Conn Leaf Spring Plug 1p	1289-4034	P HA+BH ⇨2
CN2614	Conn Leaf Spring Plug 1p	1294-8163	P HA+BH ⇨4
CN2615	Conn Leaf Spring Plug 1p	1294-8163	P HA+BH ⇨4
CN2630	Conn Leaf Spring Plug 1p	1295-7077	P HA+BH ⇨4
CN2631	Conn Leaf Spring Plug 1p	1289-4034	P HA+BH ⇨2
CN2800	Conn Leaf Spring Plug 1p	1289-4034	S HA+BH ⇨5
CN2801	Conn Leaf Spring Plug 1p	1289-4034	S HA+BH ⇨5
CN2802	Conn Coax Receptacle 1p	1261-3585	S HA+BH ⇨6
CN2803	Conn Coax Receptacle 1p	1287-3442	S HA+BH ⇨7
CN4000	Card Conn SIM Dual nanoSIM connector	1295-4064	P HA+BH or BGA ⇨8
CN4100	Card Conn Micro SD	1281-9124	P HA+BH or BGA ⇨10
CN4750	Conn Leaf Spring Plug 1p	1289-4034	P HA+BH ⇨11
CN4752	Conn Leaf Spring Plug 1p	1289-4034	P HA+BH ⇨11
CN4753	Conn Leaf Spring Plug 1p	1289-4034	P HA+BH ⇨12
CN4754	Conn Leaf Spring Plug 1p	1289-4034	P HA+BH ⇨12
CN7304	Conn Leaf Spring Plug 1p	1289-4034	P HA+BH ⇨13
CN7901	Conn Leaf Spring Plug 1p	1289-4034	S HA+BH ⇨14
CN7997	Conn Leaf Spring Plug 1p	1289-4034	P HA+BH ⇨15
CN7998	Conn Leaf Spring Plug 1p	1289-4034	P HA+BH ⇨16
CN8000	Conn Leaf Spring Plug 1p	1289-4034	S HA+BH ⇨14
CN8003	Conn Coax Receptacle 1p	1287-3442	S HA+BH ⇨17
CN8005	Conn Coax Receptacle 1p	1287-3442	S HA+BH ⇨18
CN8009	Conn Leaf Spring Plug 1p	1289-4034	S HA+BH ⇨19
CN8013	Conn Leaf Spring Plug 1p	1295-7077	P HA+BH ⇨20
CN8015	Conn Leaf Spring Plug 1p	1295-7077	P HA+BH ⇨20
CN8650	Conn Leaf Spring Plug 1p	1297-5833	S HA+BH ⇨21
CN8651	Conn Leaf Spring Plug 1p	1297-5833	S HA+BH ⇨21
D7800	LED White 1.63mm x 2.03mm	1278-5197	S HA+BH ⇨22
FL2202	Filter Ceramic Lo-pass 50.0 MHz 1608	1269-0526	S HA+BH ⇨23
MC3000	Mic 4.0 Silicon E66	1290-5899	S HA+BH ⇨24
MC3001	Mic 4.0 Silicon E58	1294-6961	S HA+BH ⇨25
R1306	Resistor 0.01 Ohm +/-1% 200.0 mW (1.6x0.	1238-2147	S HA+BH ⇨26

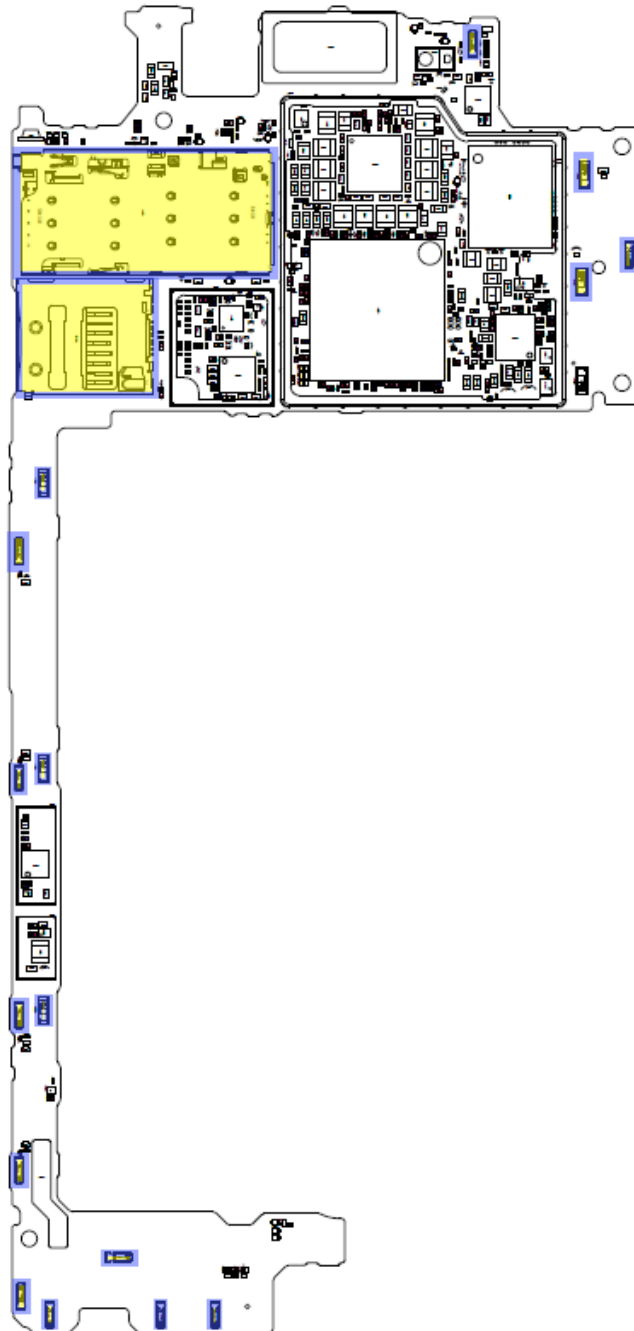
Note: Valid for E6833 and E6883

Position	Component	Part no.	Comments
CN1300	Conn BtB Plug 4p HIROSE/BM22	1281-9973	S HA+BH ⇒1
CN2600	Conn Leaf Spring Plug 1p	1289-4034	P HA+BH ⇒2
CN2611	Conn Coax Receptacle 1p	1261-3585	S HA+BH ⇒3
CN2612	Conn Leaf Spring Plug 1p	1289-4034	P HA+BH ⇒2
CN2613	Conn Leaf Spring Plug 1p	1289-4034	P HA+BH ⇒2
CN2614	Conn Leaf Spring Plug 1p	1294-8163	P HA+BH ⇒4
CN2615	Conn Leaf Spring Plug 1p	1294-8163	P HA+BH ⇒4
CN2630	Conn Leaf Spring Plug 1p	1295-7077	P HA+BH ⇒4
CN2631	Conn Leaf Spring Plug 1p	1289-4034	P HA+BH ⇒2
CN2800	Conn Leaf Spring Plug 1p	1289-4034	S HA+BH ⇒5
CN2801	Conn Leaf Spring Plug 1p	1289-4034	S HA+BH ⇒5
CN2802	Conn Coax Receptacle 1p	1261-3585	S HA+BH ⇒6
CN2803	Conn Coax Receptacle 1p	1287-3442	S HA+BH ⇒7
CN4000	Card Conn Other microSD and nanoSIM comb	1288-5918	P HA+BH or BGA ⇒9
CN4750	Conn Leaf Spring Plug 1p	1289-4034	P HA+BH ⇒11
CN4752	Conn Leaf Spring Plug 1p	1289-4034	P HA+BH ⇒11
CN4753	Conn Leaf Spring Plug 1p	1289-4034	P HA+BH ⇒12
CN4754	Conn Leaf Spring Plug 1p	1289-4034	P HA+BH ⇒12
CN7304	Conn Leaf Spring Plug 1p	1289-4034	P HA+BH ⇒13
CN7901	Conn Leaf Spring Plug 1p	1289-4034	S HA+BH ⇒14
CN7997	Conn Leaf Spring Plug 1p	1289-4034	P HA+BH ⇒15
CN7998	Conn Leaf Spring Plug 1p	1289-4034	P HA+BH ⇒16
CN8000	Conn Leaf Spring Plug 1p	1289-4034	S HA+BH ⇒14
CN8003	Conn Coax Receptacle 1p	1287-3442	S HA+BH ⇒17
CN8005	Conn Coax Receptacle 1p	1287-3442	S HA+BH ⇒18
CN8009	Conn Leaf Spring Plug 1p	1289-4034	S HA+BH ⇒19
CN8013	Conn Leaf Spring Plug 1p	1295-7077	P HA+BH ⇒20
CN8015	Conn Leaf Spring Plug 1p	1295-7077	P HA+BH ⇒20
CN8650	Conn Leaf Spring Plug 1p	1297-5833	S HA+BH ⇒21
CN8651	Conn Leaf Spring Plug 1p	1297-5833	S HA+BH ⇒21
D7800	LED White 1.63mm x 2.03mm	1278-5197	S HA+BH ⇒22
FL2202	Filter Ceramic Lo-pass 50.0 MHz 1608	1269-0526	S HA+BH ⇒23
MC3000	Mic 4.0 Silicon E66	1290-5899	S HA+BH ⇒24
MC3001	Mic 4.0 Silicon E58	1294-6961	S HA+BH ⇒25
R1306	Resistor 0.01 Ohm +/-1% 200.0 mW (1.6x0.	1238-2147	S HA+BH ⇒26

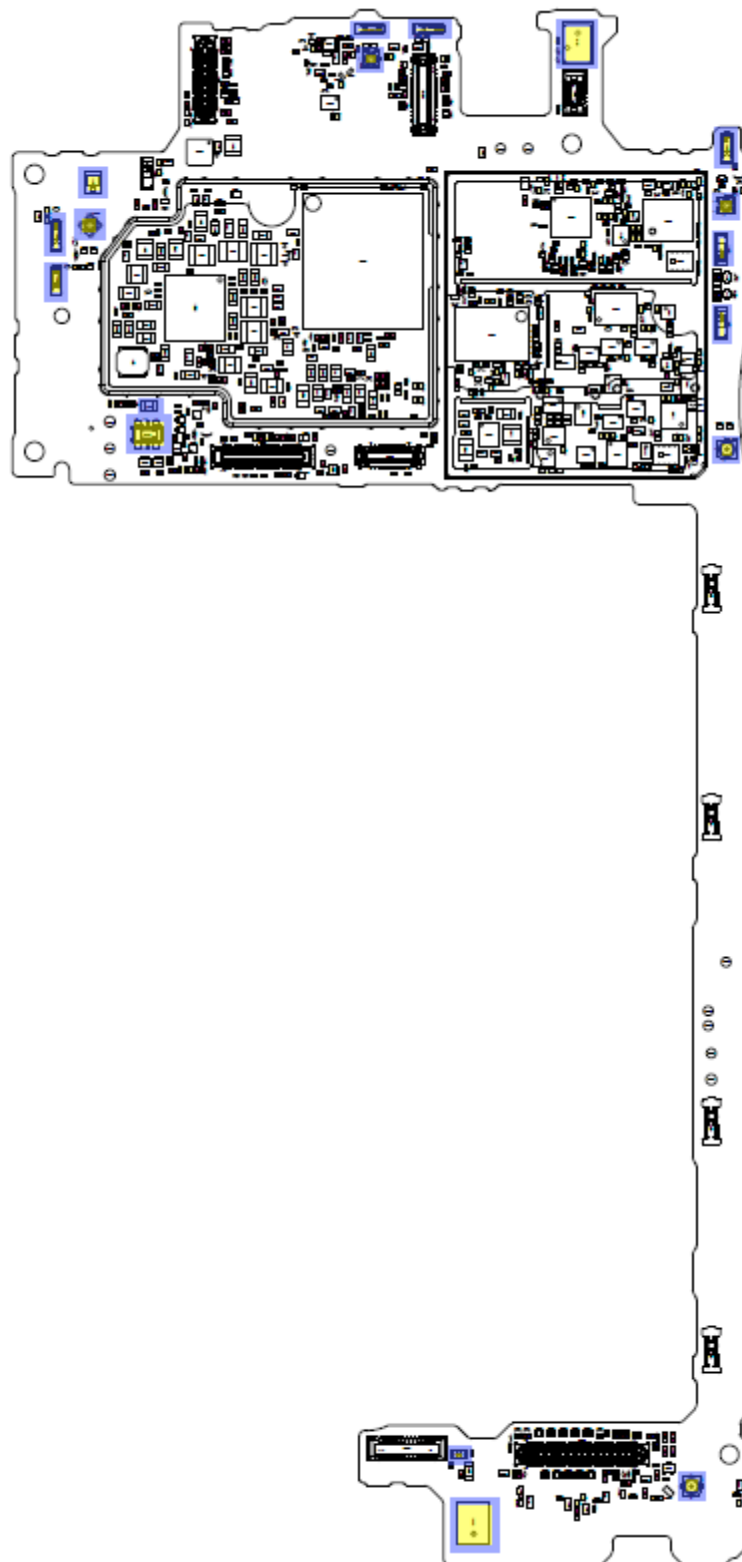
Note: Valid for E6853

## 2 Component Placing

To access the Component Placing document, double-click the icon below.  
Applicable for on-screen viewing only – icon not shown on hard-copies.

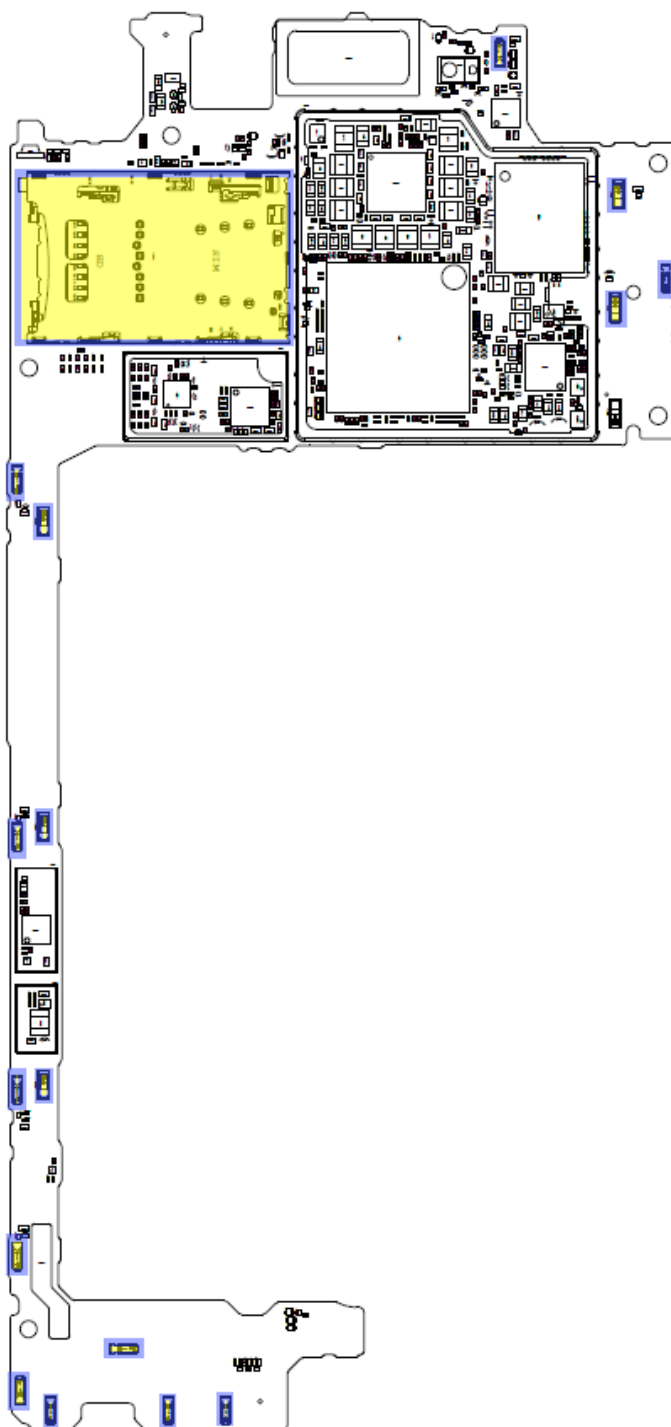


**E6833 and E6883 Primary side**



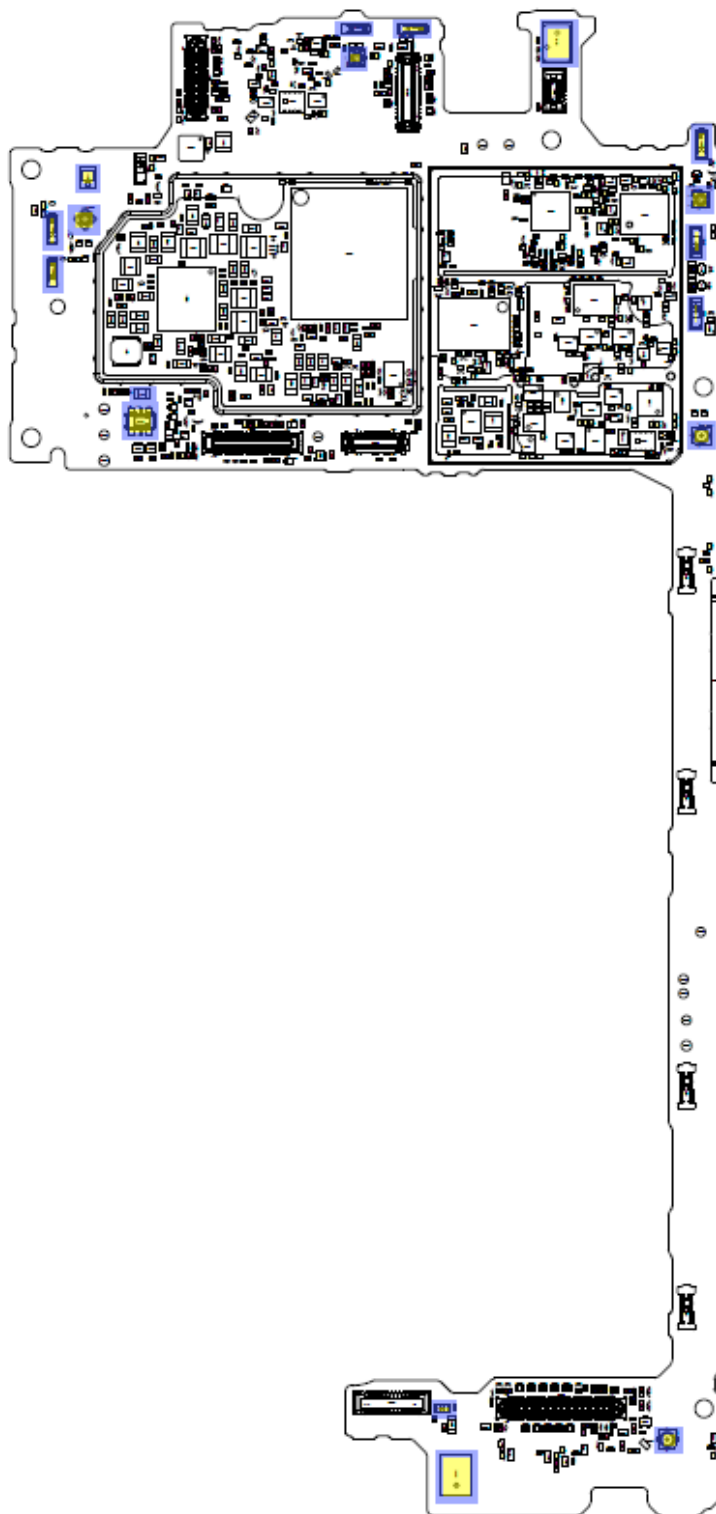
**E6833 and E6883 Secondary side**

To access the Component Placing document, double-click the icon below.  
Applicable for on-screen viewing only – icon not shown on hard-copies.



**E6853 Primary side**





**E6853 Secondary side**

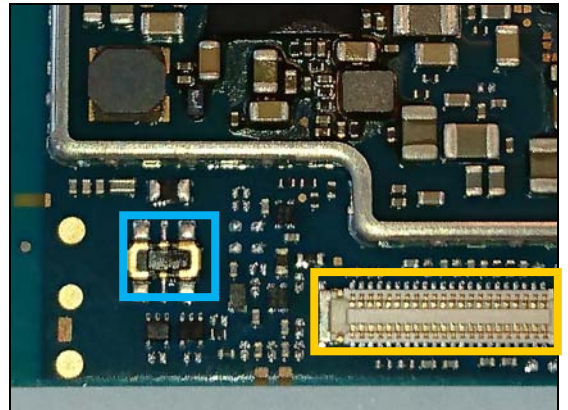
## 3 Additional Repair info

1

CN1300

**Replace if mechanical damaged. (Phone dead or power off)**

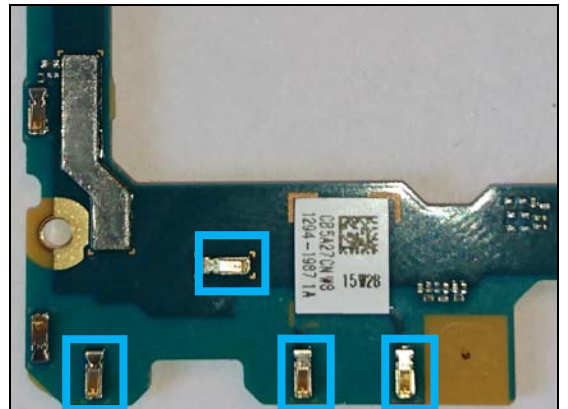
**Protect the BtB connector with capton tape!**



2

CN2600, CN2612, CN2613, CN2631

**Replace if mechanical damaged (No or bad network, main antenna)**

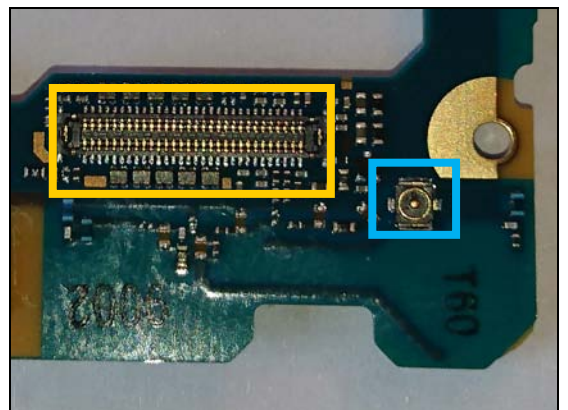


3

CN2611

**Replace if mechanical damaged (No or bad network, main antenna)**

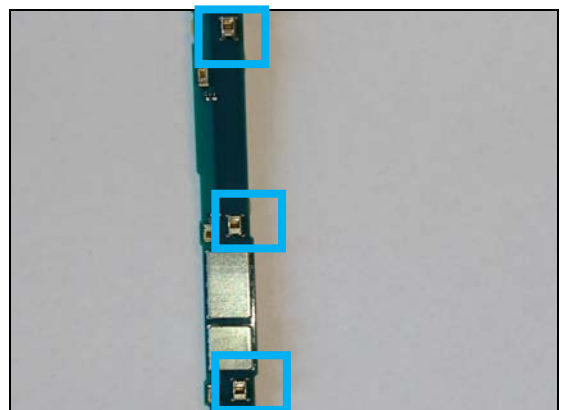
**Protect the BtB connector with capton tape!**



4

CN2614, CN2615, CN2630

**Replace if mechanical damaged ( GND contact)**



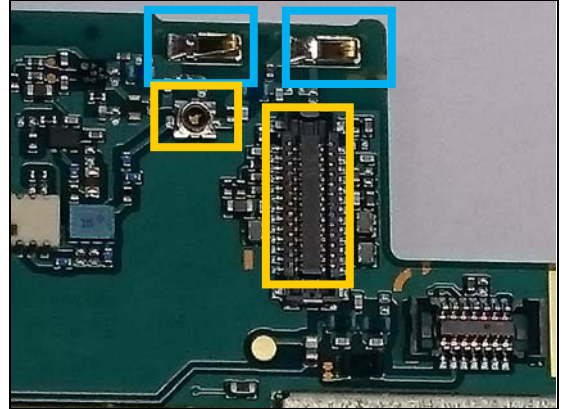
## Repair Actions: Additional Repair Info

5

CN2800,CN2801

*Replace if mechanical damaged (No or bad network, diversity antenna)*

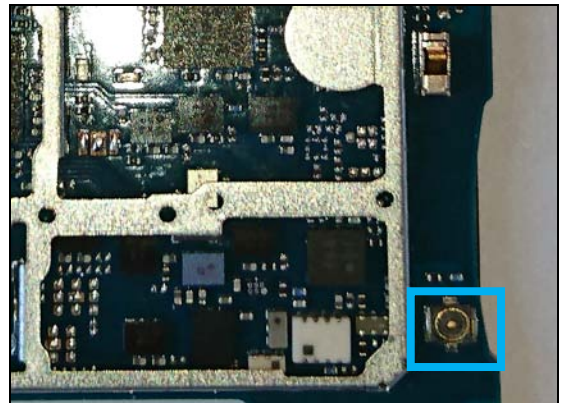
*Protect the RF and BtB connector with capton tape!*



6

CN2802

*Replace if mechanical damaged (No or bad network, main antenna)*

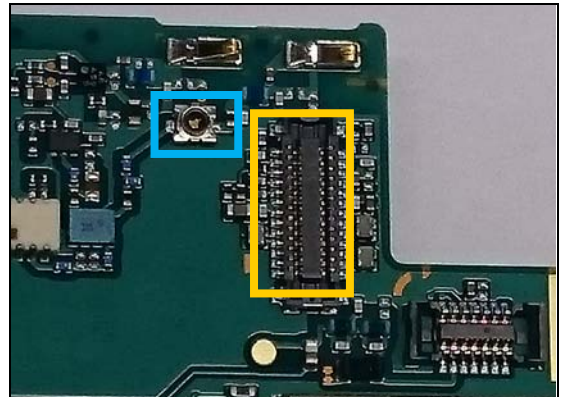


7

CN2803

*Replace if open circuit 1-4 (No or bad network, diversity antenna)*

*Protect the BtB connector with capton tape!*

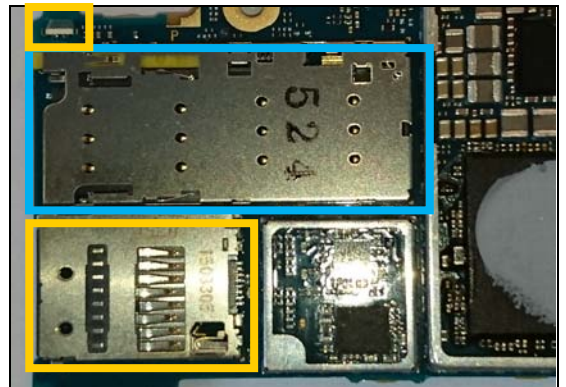


8

CN4000 E6833 E6883

*Replace if mechanical damaged (No network, restart, No SIM card inserted, NFC SIM problem, reset problem)*

*Protect the SD connector and LED with capton tape!*



## Repair Actions: Additional Repair Info

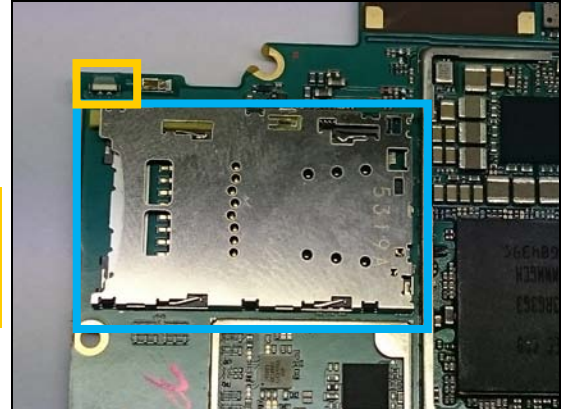
9

CN4000

E6853

*Replace if mechanical damaged (No network, restart, No SIM card inserted, NFC SIM problem, reset problem, no SD card)*

*Protect the LED with capton tape!*



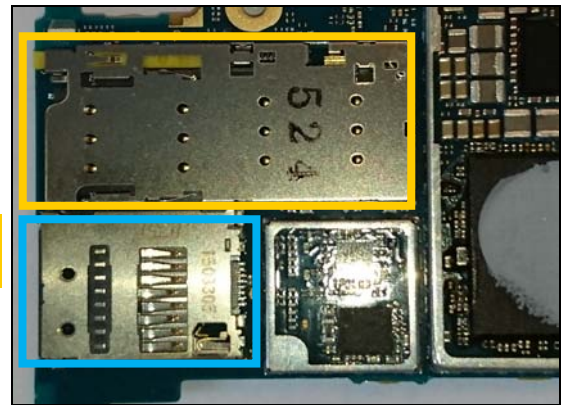
10

CN4100

E6833 E6883

*Replace if mechanical damaged (No SD card)*

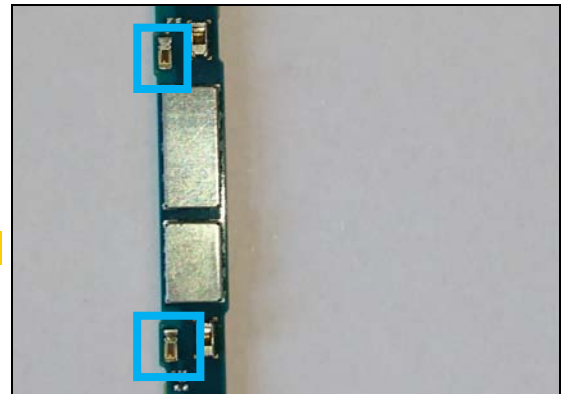
*Protect the SIM connector with capton tape!*



11

CN4750, CN4752

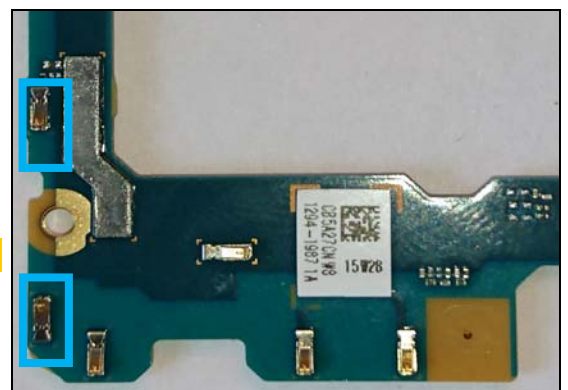
*Replace if mechanical damaged ( GND contact)*



12

CN4753, CN4754

*Replace if mechanical damaged ( GND contact)*



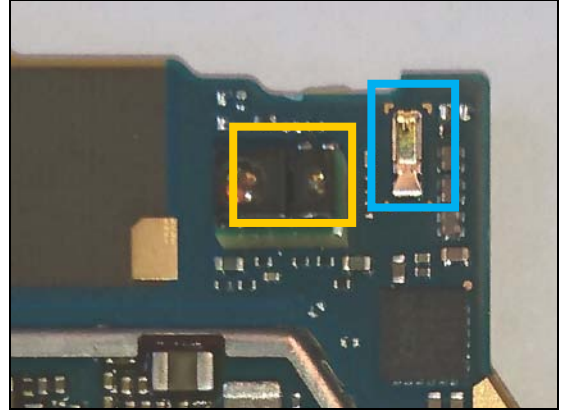


## Repair Actions: Additional Repair Info

**13**

**CN7304**

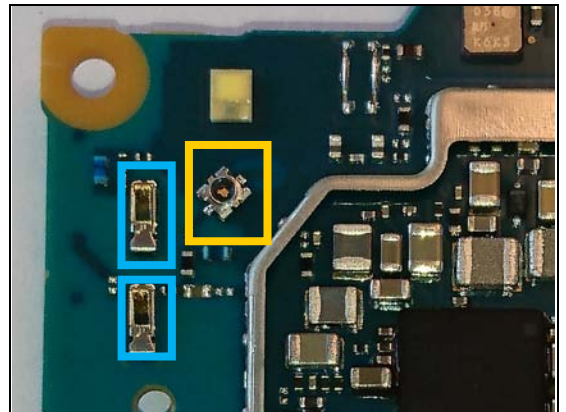
*Replace if mechanical damaged ( GND contact)  
Protect the sensor with capton tape!*



**14**

**CN7901, CN8000**

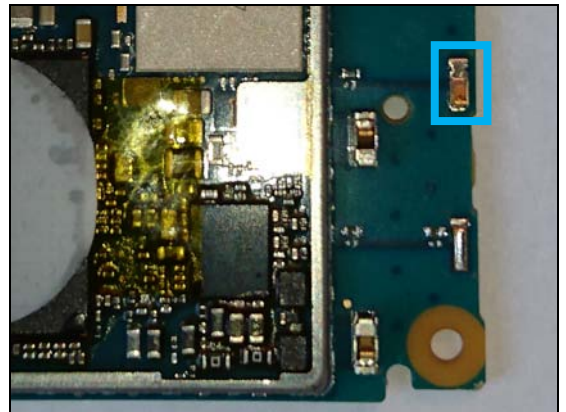
*Replace if mechanical damaged (No or bad WLAN /BT,  
Main antenna)  
Protect the RF connector with capton tape!*



**15**

**CN7997**

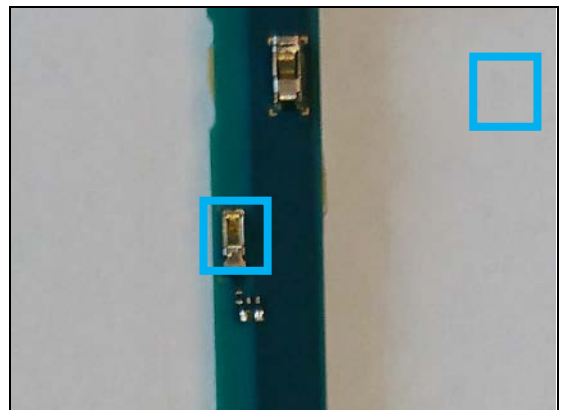
*Replace if mechanical damaged (No or bad WLAN /BT,  
Main antenna)*



**16**

**CN7998**

*Replace if mechanical damaged (No or bad WLAN /BT,  
Sub antenna)*



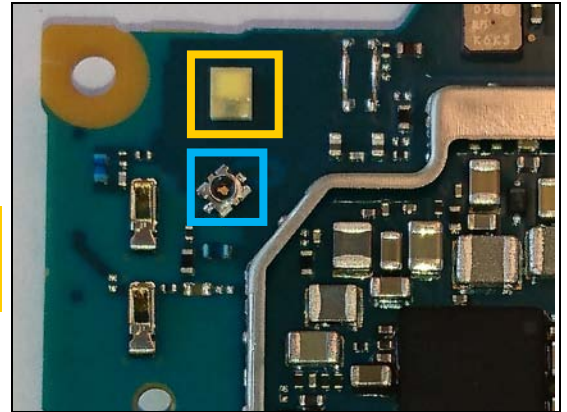
## Repair Actions: Additional Repair Info

17

CN8003

**Replace if open circuit 1-4 (No or bad WLAN / BT, Main antenna)**

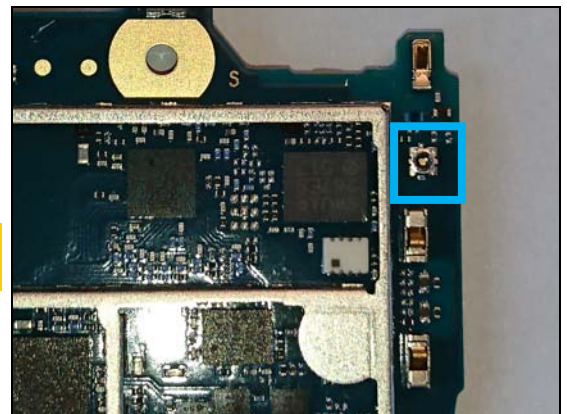
**Protect the LED with capton tape!**



18

CN8005

**Replace if open circuit 1-4 (No or bad WLAN / BT, Sub antenna)**

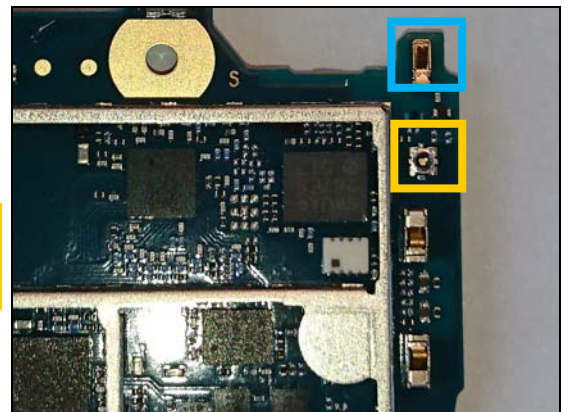


19

CN8009

**Replace if mechanical damaged (No or bad WLAN / BT, Sub antenna)**

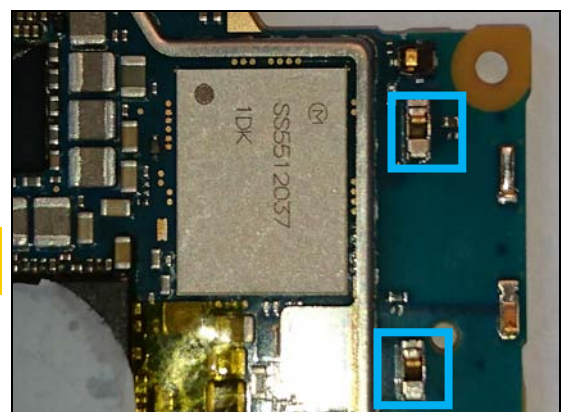
**Protect the RF connector with capton tape!**



20

CN8013, CN8015

**Replace if mechanical damaged (No or bad WLAN / BT, Main antenna)**

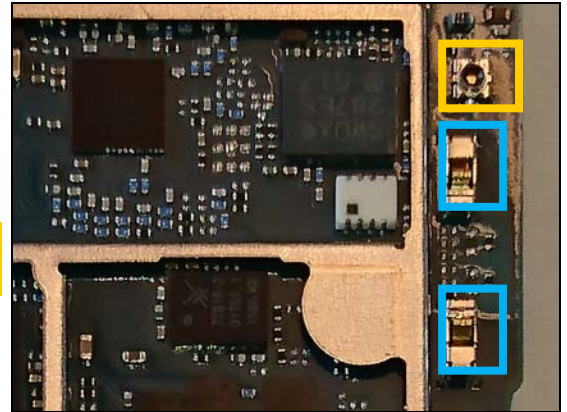


## Repair Actions: Additional Repair Info

**21**

**CN8650, CN8651**

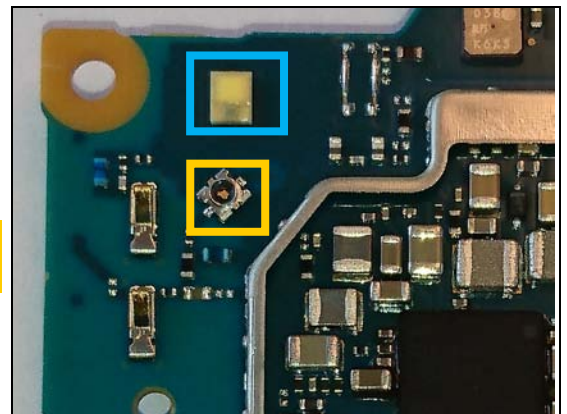
*Replace if mechanical damaged (No or bad NFC)  
Protect the RF connector with capton tape!*



**22**

**D7800**

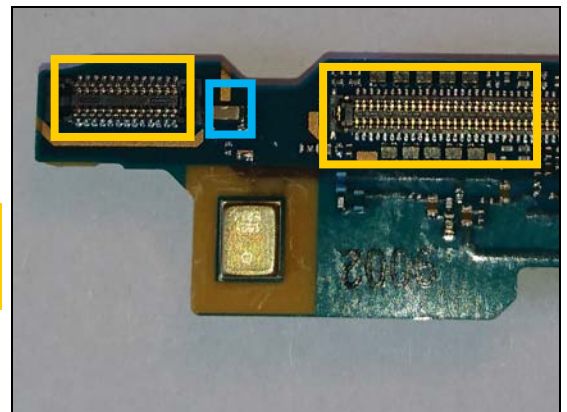
*Replace if Flash LED not working.  
Protect the RF connector with capton tape!*



**23**

**FL2202**

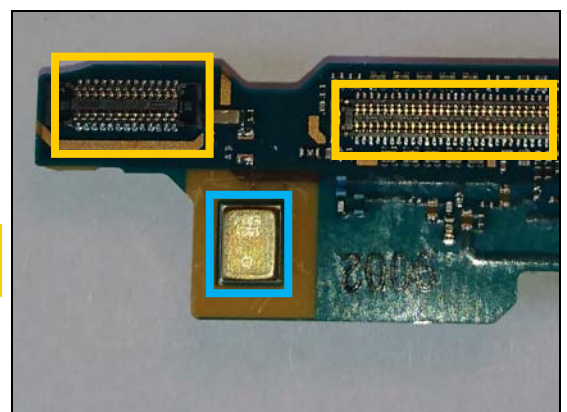
*Replace if open circuit (Not charging from USB connector)  
Protect the BtB connectors with capton tape!*



**24**

**MC3000**

*Replace if no audio from Primary Mic  
Protect the BtB connectors with capton tape!*



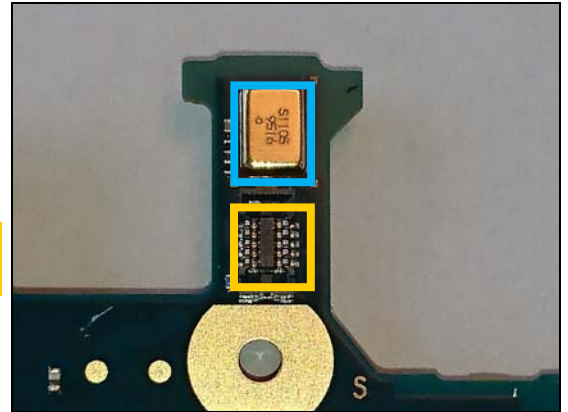


## Repair Actions: Additional Repair Info

**25**

**MC3001**

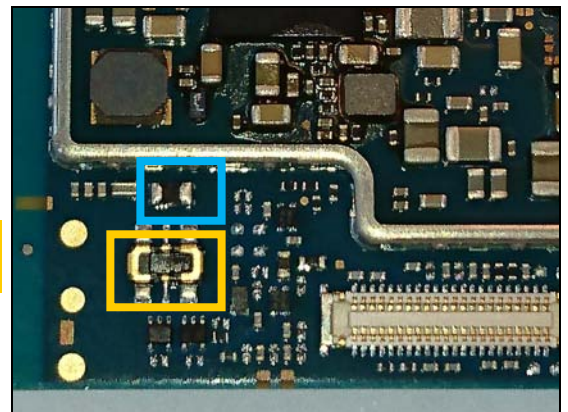
***Replace if no audio from Secondary Mic***  
***Protect the BtB connector with capton tape!***



**26**

**R1306**

***Replace if open circuit (Phone dead or power off)***  
***Protect the BtB connector with capton tape!***





## 4 Revision History

Rev.	Date	Changes / Comments
1	2015-10-22	Initial release
2	2015-11-04	Additional repair info added